

State of Wyoming Corner Record

CORNER PERPETUATION AND FILING ACT,

Regulations of the Board of Registration for Professional Engineers and Land Surveyors.)

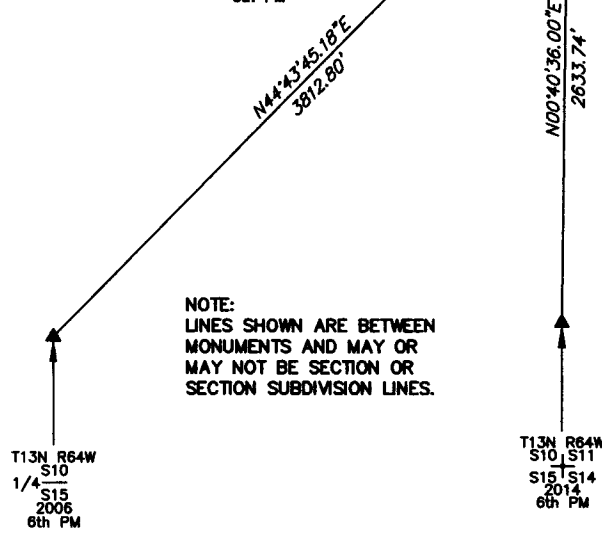
Reverse side of this form may be used if more space is needed.

Record of original survey and citation of source of historic information (if corner is lost or obliterated). Description of corner monumentation evidence found and/or monument and accessories established to perpetuate the location of this corner. Sketch of relative location of monument, accessories, and reference points with course and distance to adjacent corner(s) (if determined in this survey). Method and rationale for reestablishment of lost or obliterated corner.

FOUND A 5/8" REBAR WITH A YELLOW PLASTIC CAP AT THE LOCATION OF THIS 1/4 CORNER OF MAXIMUM CONTROL. UPGRADED THE MONUMENT TO A 2.5" UELS PRIVATE ALUMINUM CAP 0.3' BELOW THE SURFACE OF THE GROUND 60' EAST OF THE CENTERLINE OF COUNTY ROAD #140. 15' SOUTH OF SOUTH EDGE OF ASPHALT FIELD ENTRANCE, 39' WEST OF NORTH/SOUTH FENCE, & IN LINE WITH FENCE RUNNING EASTERLY.

THE MONUMENT IS FOR:

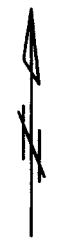
T13N R64W
1/4
S10 | S11
2014
6th PM



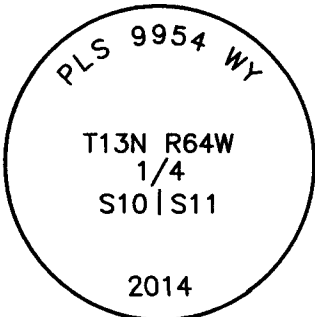
NOTE:
LINES SHOWN ARE BETWEEN MONUMENTS AND MAY OR MAY NOT BE SECTION OR SECTION SUBDIVISION LINES.

T13N R64W
1/4
S10 | S15
2006
6th PM

T13N R64W
S10 | S11
S15 | S14
2014
6th PM



SCALE 1"=1000'
(EXCEPT IN TRIVIAL CASES)
BEARINGS ARE RELATED TO WGS 84 WITH GPS OBSERVATIONS
DRAWN BY: SM
P.C. T. BEASLEY
COUNTY: LARAMIE



CORNER MONUMENT SYMBOLS

- RECORD IS FOR THIS CORNER MONUMENT.
- ▲ A RELATED CORNER OR WC MONUMENT.

THE MONUMENT IS MARKED

Date of Field Work: 07/26/2014 Office Reference: _____

CROSS INDEX DIAGRAM

1	2	3	4	5	6	7	8	9	10	11	12	13	14	15	16	17	18	19	20	21	22	23	24	25	
A																									A
B																									B
C	6	5	4	3	2																				C
D																									D
E																									E
F																									F
G	7	8	9	10	11	12																			G
H																									H
J																									J
K																									K
L	18	17	16	15	14	13																			L
M																									M
N																									N
O																									O
P	19	20	21	22	23	24																			P
Q																									Q
R																									R
S																									S
T	30	29	28	27	26	25																			T
U																									U
V																									V
W																									W
X	31	32	33	34	35	36																			X
Y																									Y
Z																									Z

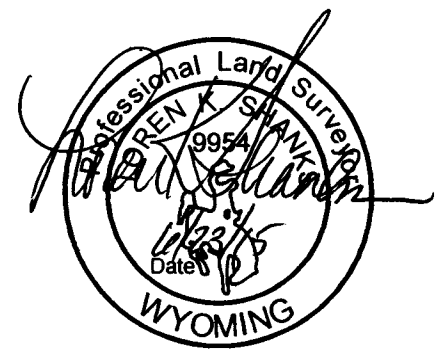
Firm/Agency, Address

UELS, LLC
85 South 200 East
Vernal, Utah 84078

Telephone Number: 435-789-1017

This corner record was prepared by me or under my direction and supervision.

SEAL & SIGNATURE



RECP #: 670071

RECORDED 9/22/2015 AT 10:39 AM BK# 2465 PG# 79
Debra K. Lathrop, CLERK OF LARAMIE COUNTY, WY PAGE 1 OF 1

Corner Name: EAST 1/4 CORNER OF SECTION 10 Section: 10 T. 13N R. 64W ; 6TH P.M. Cross Index No.: G-17